



airMAX™ YAGI Antenna

900 MHz 2x2 MIMO High-Gain Antenna

Model: AMY-9M16

Ultimate in RF Performance

Easily Integrates with Rocket M900 (sold separately)

Incredible Range and Speed

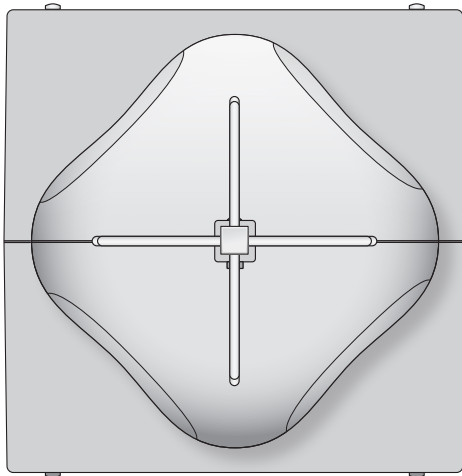


Model Details

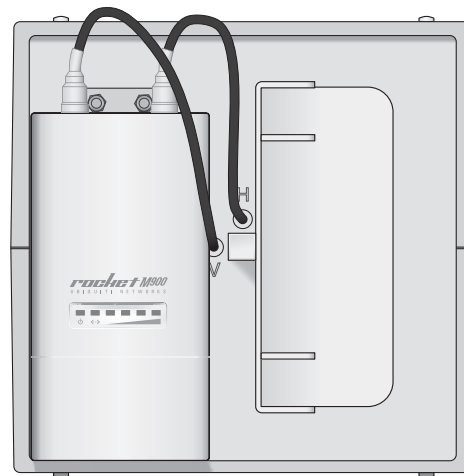
airMAX YAGI Antenna*

Model: AMY-9M16

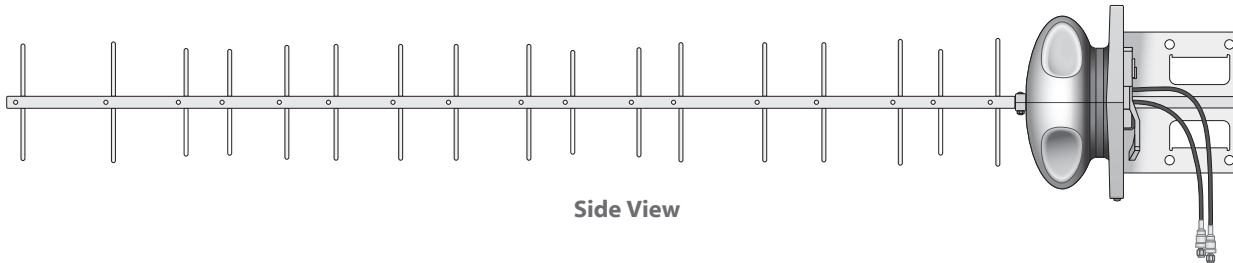
- 902 - 928 MHz
- 16 dBi, Both Polarizations



Front View



Rear View



Side View



Front View



Side View



Rear View

RocketM900**

Model: M900

- 2x2 MIMO
- Low Latency
- 90+ Mbps Real TCP Throughput
- 20+ km Long Range

*airMAX YAGI Antenna available in 2-pack

**RocketM900 sold separately

Specifications

Rocket M900 System Information	
Processor Specs	Atheros MIPS 24KC, 400 MHz
Memory Information	64MB SDRAM, 8MB Flash
Networking Interface	(1) 10/100 Ethernet Port

Rocket M900 Regulatory/Compliance Information	
Wireless Approvals	FCC Part 15.247, IC RS210
RoHS Compliance	Yes

Rocket M900 Physical / Electrical / Environmental	
Enclosure Size	16 2 x 83 x 35 mm
Weight	240 g
Enclosure Characteristics	Outdoor UV Stabilized Plastic
Mounting Kit	Pole Mounting Kit Included
Max. Power Consumption	6.5 W
Power Supply	24V, 1A PoE Supply Included
Power Method	Passive Power over Ethernet (Pairs 4, 5+; 7, 8 Return)
Operating Temperature	-30 to 75° C
Operating Humidity	5 to 95% Condensing
Shock and Vibration	ETSI300-019-1.4

airMAX 900 MHz YAGI Antenna Characteristics	
AMY-9M16	
Frequency Range	902 - 928 MHz
Gain	16 dBi, Both Polarizations
HPOL Beamwidth	29 to 34°
VPOL Beamwidth	29 to 34°
F/B Ratio	20 dB
Max VSWR	< 1.5:1 Over Band
Dimensions	1365 x 215 x 218 mm
Weight	2.5 kg
Wind Survivability	120 mph
Wind Loading	35 ft-lbs @ 100 mph
Polarization	Dual Linear
Cross-pol Isolation	20 dB
ETSI Specification	EN 302 326 DN2
Mounting	M8 U-Bolt Pole Mounting Kit Included

airMAX 900 MHz YAGI Antenna Polar Plots

